

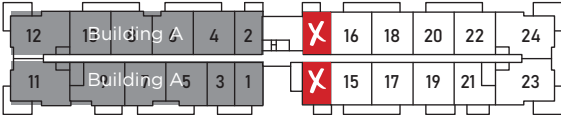
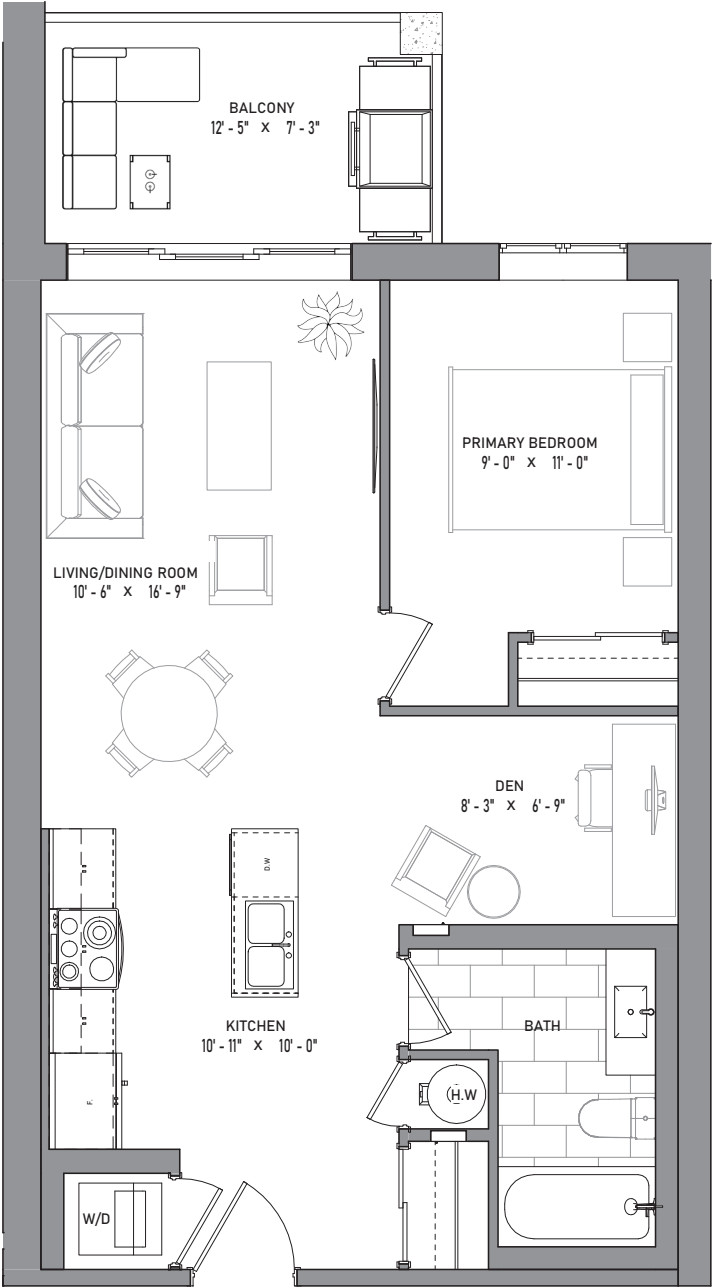


# Blair

683 - 704 SQ. FT.    1+Den      1   




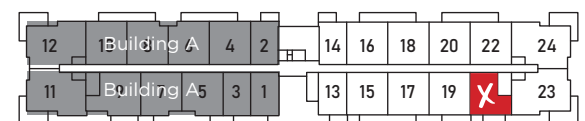
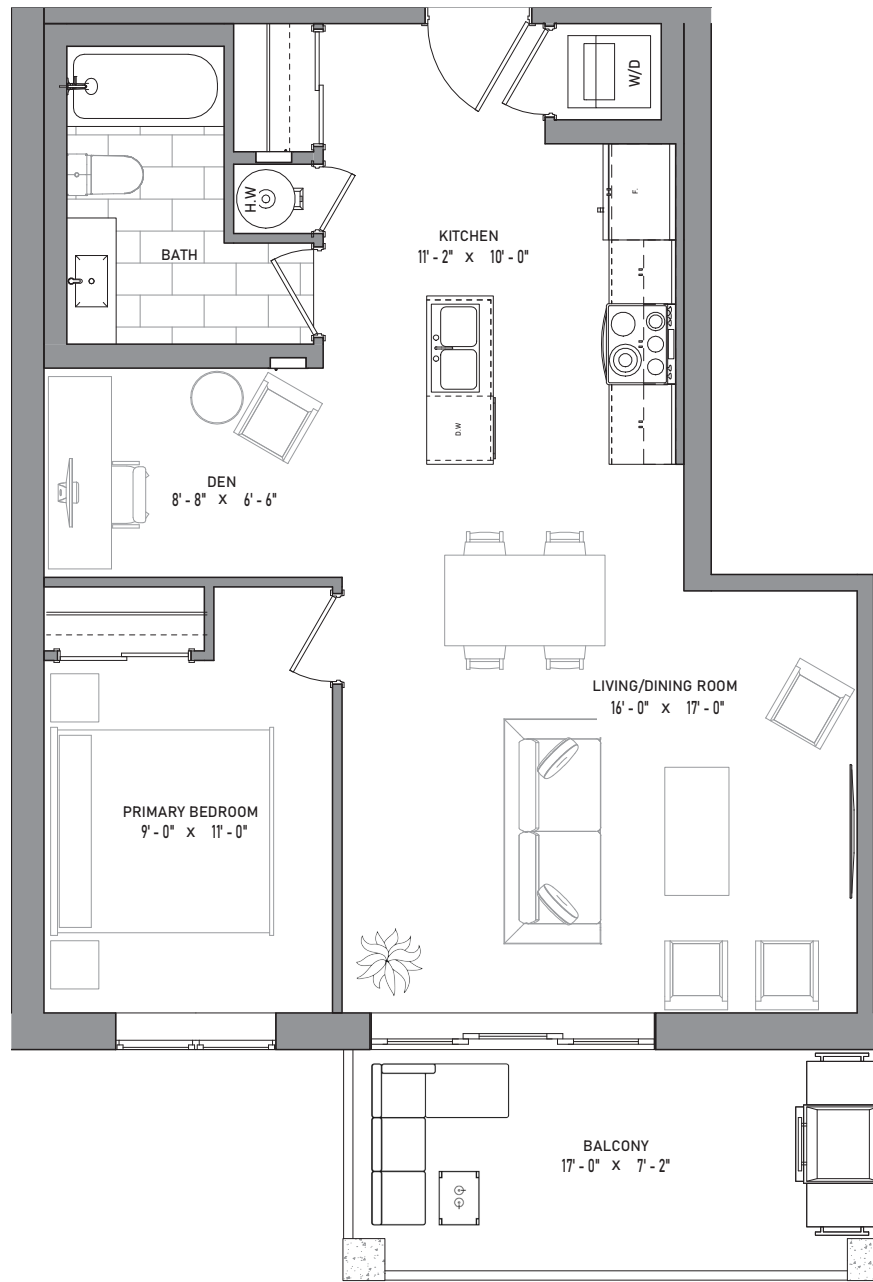
Available on Second, Third and Fourth Floors



This plan is not to scale and is subject to architectural review and revision, including without limitation, the Unit being constructed with a layout that is the reverse of that set out above. Architectural, structural, and mechanical layouts are subject to change without notice. All materials, specifications, details and dimensions, if any, are approximate and subject to change by the Vendor without notice to the Purchaser in order to comply with building site conditions and municipal, structural, Vendor, and/or architectural requirements. Actual usable floor space may vary from the stated floor area in accordance with Bulletin 22 published by the Taron Warranty Corporation. Bulkheads are now shown on this plan and may be located in areas of the Unit as required. All exterior spaces shown, if any, are exclusive use common elements shown for display purposes only and the location and size are subject to change by the Vendor without notice to the Purchaser. Window location, size and type may vary without notice to the Purchaser. Certain floors may have less floor space due to thicker structural members, mechanical rooms, etc. This plan supersedes any marketing plan or material. Furniture and fixture representations are for illustration purposes only and do not reflect electrical plans for the suite. All suites are sold unfurnished. All measurements are calculated in accordance with industry accepted standards. All images and dimensions are not intended to form a part of any Agreement and are included for display purposes only. All illustrations are the artist's concept. Tile patterns may vary. Actual usable floor space may vary. E.O.E. May 2022.

# Finley

764 SQ. FT. 1+Den  1   
+120 SQ. FT. OUTDOOR LIVING



The logo for Xcreemore Condos features a large, stylized red 'X' on the left. To its right, the word 'creemore' is written in a black, cursive script font. Below 'creemore', the word 'Condos' is written in a bold, red, sans-serif font.

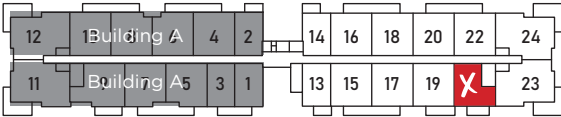
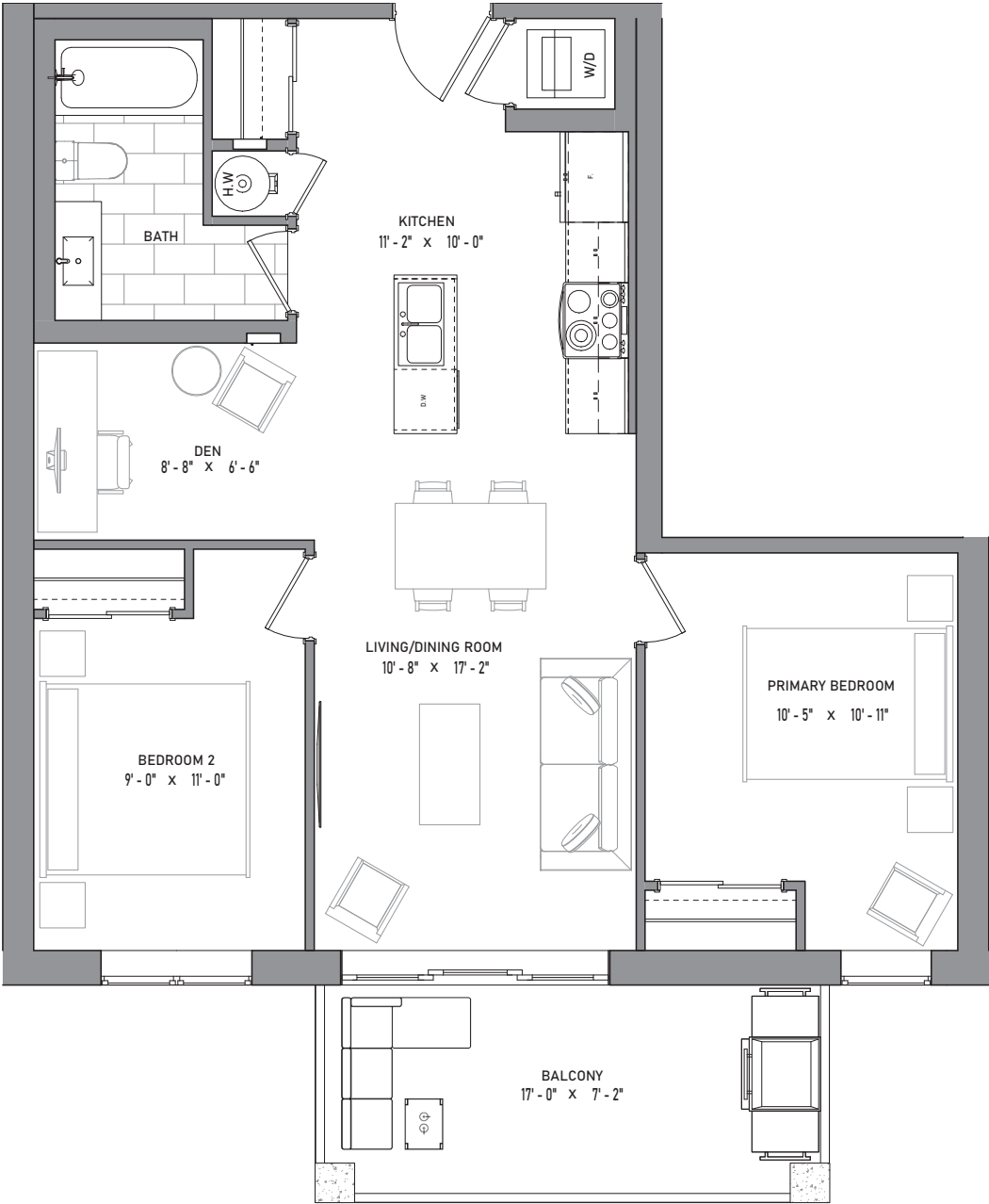
Available on Second Floor Only



This plan is not to scale and is subject to architectural review and revision, including without limitation, the Unit being constructed with a layout that is the reverse of that set out above. Architectural, structural, and mechanical layouts are subject to change without notice. All materials, specifications, details and dimensions, if any, are approximate and subject to change by the Vendor without notice to the Purchaser in order to comply with building site conditions and municipal, structural, Vendor, and/or architectural requirements. Actual usable floor space may vary from the stated floor area in accordance with Bulletin 22 published by the Taron Warranty Corporation. Bulkheads are now shown on this plan and may be located in areas of the Unit as required. All exterior spaces shown, if any, are exclusive use common elements shown for display purposes only and the location and size are subject to change by the Vendor without notice to the Purchaser. Window location, size and type may vary without notice to the Purchaser. Certain floors may have less floor space due to thicker structural members, mechanical rooms, etc. This plan supersedes any marketing plan or material. Furniture and fixture representations are for illustration purposes only and do not reflect electrical plans for the suite. All suites are sold unfurnished. All measurements are calculated in accordance with industry accepted standards. All images and dimensions are not intended to form a part of any Agreement and are included for display purposes only. All illustrations are the artist's concept. Tile patterns may vary. Actual usable floor space may vary. E.O.E. May 2022.

# Keelan

839 SQ. FT.    2+Den  1   
+120 SQ. FT. OUTDOOR LIVING



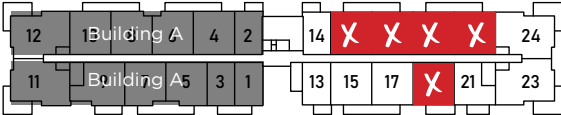
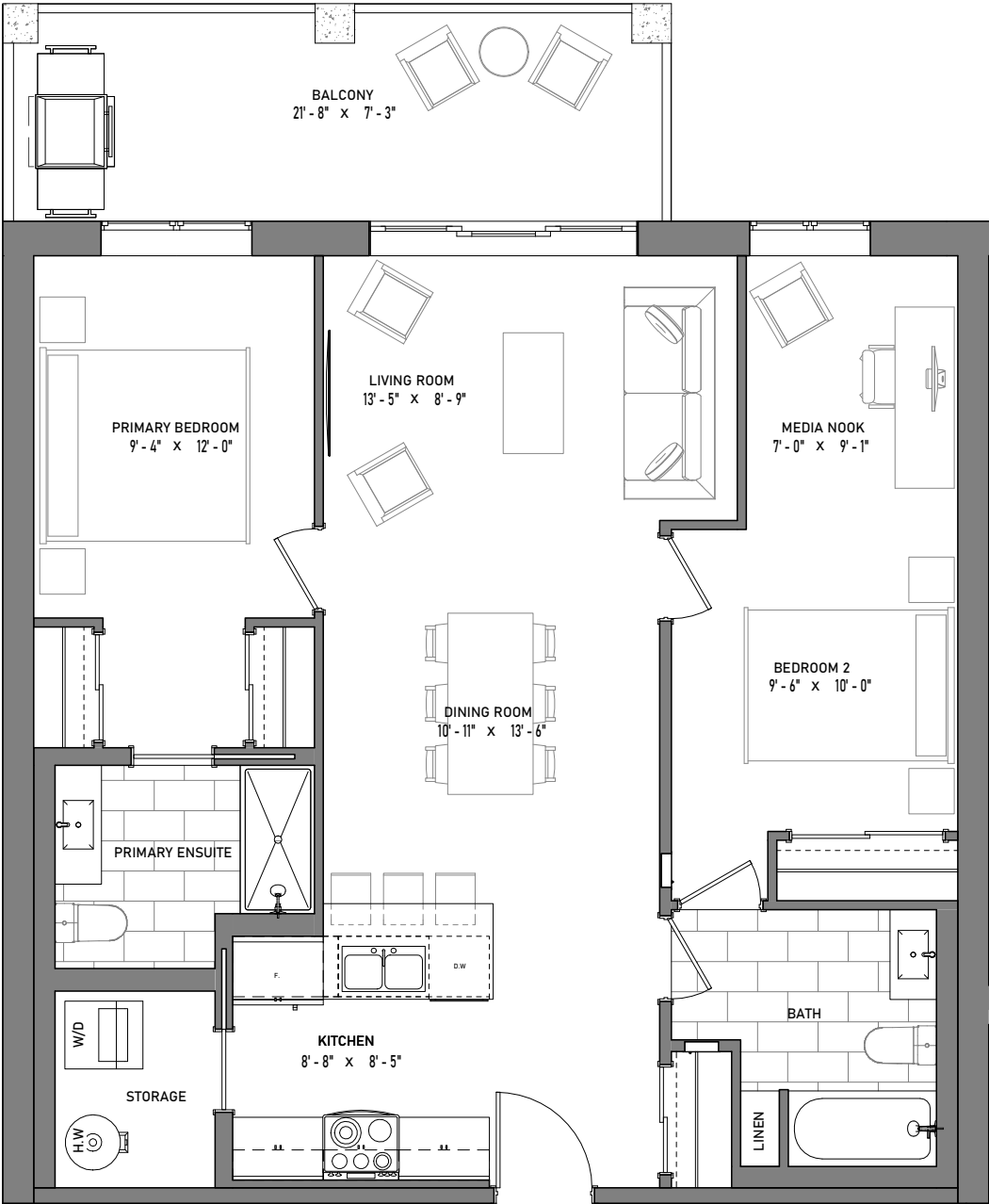
Available on Third and Fourth Floors



This plan is not to scale and is subject to architectural review and revision, including without limitation, the Unit being constructed with a layout that is the reverse of that set out above. Architectural, structural, and mechanical layouts are subject to change without notice. All materials, specifications, details and dimensions, if any, are approximate and subject to change by the Vendor without notice to the Purchaser in order to comply with building site conditions and municipal, structural, Vendor, and/or architectural requirements. Actual usable floor space may vary from the stated floor area in accordance with Bulletin 22 published by the Taron Warranty Corporation. Bulkheads are now shown on this plan and may be located in areas of the Unit as required. All exterior spaces shown, if any, are exclusive use common elements shown for display purposes only and the location and size are subject to change by the Vendor without notice to the Purchaser. Window location, size and type may vary without notice to the Purchaser. Certain floors may have less floor space due to thicker structural members, mechanical rooms, etc. This plan supersedes any marketing plan or material. Furniture and fixture representations are for illustration purposes only and do not reflect electrical plans for the suite. All suites are sold unfurnished. All measurements are calculated in accordance with industry accepted standards. All images and dimensions are not intended to form a part of any Agreement and are included for display purposes only. All illustrations are the artist's concept. Tile patterns may vary. Actual usable floor space may vary. E.O.E. May 2022.

# McKenna

1,025 SQ. FT. 2+Media  2   
+156 SQ. FT. OUTDOOR LIVING



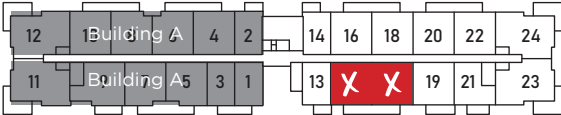
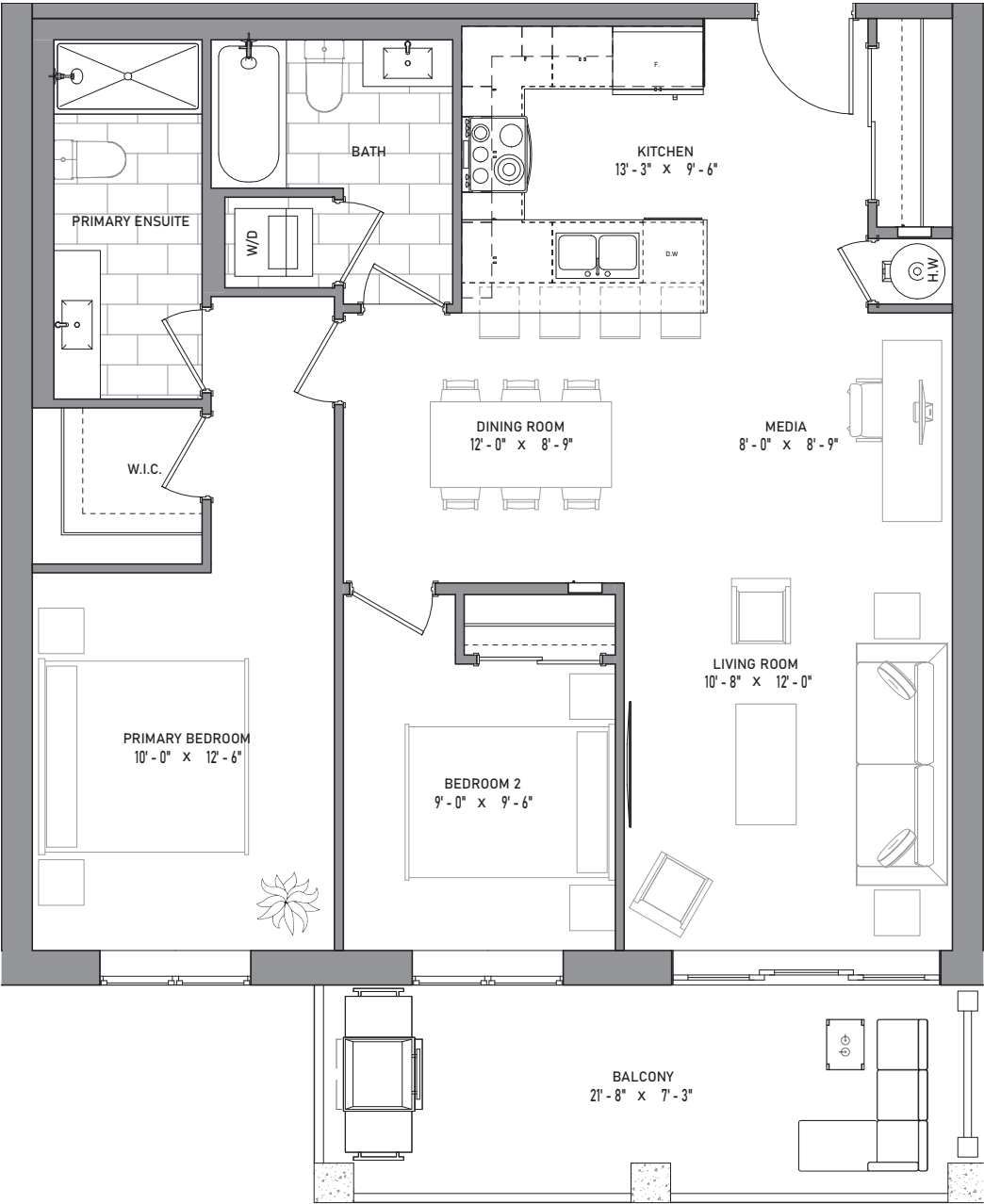
Available on Second, Third and Fourth Floors



This plan is not to scale and is subject to architectural review and revision, including without limitation, the Unit being constructed with a layout that is the reverse of that set out above. Architectural, structural, and mechanical layouts are subject to change without notice. All materials, specifications, details and dimensions, if any, are approximate and subject to change by the Vendor without notice to the Purchaser in order to comply with building site conditions and municipal, structural, Vendor, and/or architectural requirements. Actual usable floor space may vary from the stated floor area in accordance with Bulletin 22 published by the Taron Warranty Corporation. Bulkheads are now shown on this plan and may be located in areas of the Unit as required. All exterior spaces shown, if any, are exclusive use common elements shown for display purposes only and the location and size are subject to change by the Vendor without notice to the Purchaser. Window location, size and type may vary without notice to the Purchaser. Certain floors may have less floor space due to thicker structural members, mechanical rooms, etc. This plan supersedes any marketing plan or material. Furniture and fixture representations are for illustration purposes only and do not reflect electrical plans for the suite. All suites are sold unfurnished. All measurements are calculated in accordance with industry accepted standards. All images and dimensions are not intended to form a part of any Agreement and are included for display purposes only. All illustrations are the artist's concept. Tile patterns may vary. Actual usable floor space may vary. E.O.E. May 2022.

# Arlie

1,025 SQ. FT. 2+Media  2   
+156 SQ. FT. OUTDOOR LIVING



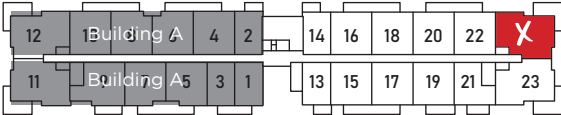
Available on Second, Third and Fourth Floors



This plan is not to scale and is subject to architectural review and revision, including without limitation, the Unit being constructed with a layout that is the reverse of that set out above. Architectural, structural, and mechanical layouts are subject to change without notice. All materials, specifications, details and dimensions, if any, are approximate and subject to change by the Vendor without notice to the Purchaser in order to comply with building site conditions and municipal, structural, Vendor, and/or architectural requirements. Actual usable floor space may vary from the stated floor area in accordance with Bulletin 22 published by the Taron Warranty Corporation. Bulkheads are now shown on this plan and may be located in areas of the Unit as required. All exterior spaces shown, if any, are exclusive use common elements shown for display purposes only and the location and size are subject to change by the Vendor without notice to the Purchaser. Window location, size and type may vary without notice to the Purchaser. Certain floors may have less floor space due to thicker structural members, mechanical rooms, etc. This plan supersedes any marketing plan or material. Furniture and fixture representations are for illustration purposes only and do not reflect electrical plans for the suite. All suites are sold unfurnished. All measurements are calculated in accordance with industry accepted standards. All images and dimensions are not intended to form a part of any Agreement and are included for display purposes only. All illustrations are the artist's concept. Tile patterns may vary. Actual usable floor space may vary. E.O.E. May 2022.

Bronte

1,396 SQ. FT.     3  2   
+290 SQ. FT. OUTDOOR LIVING



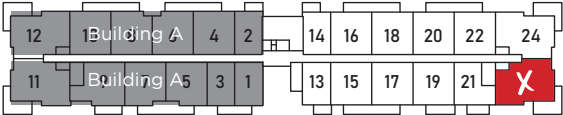
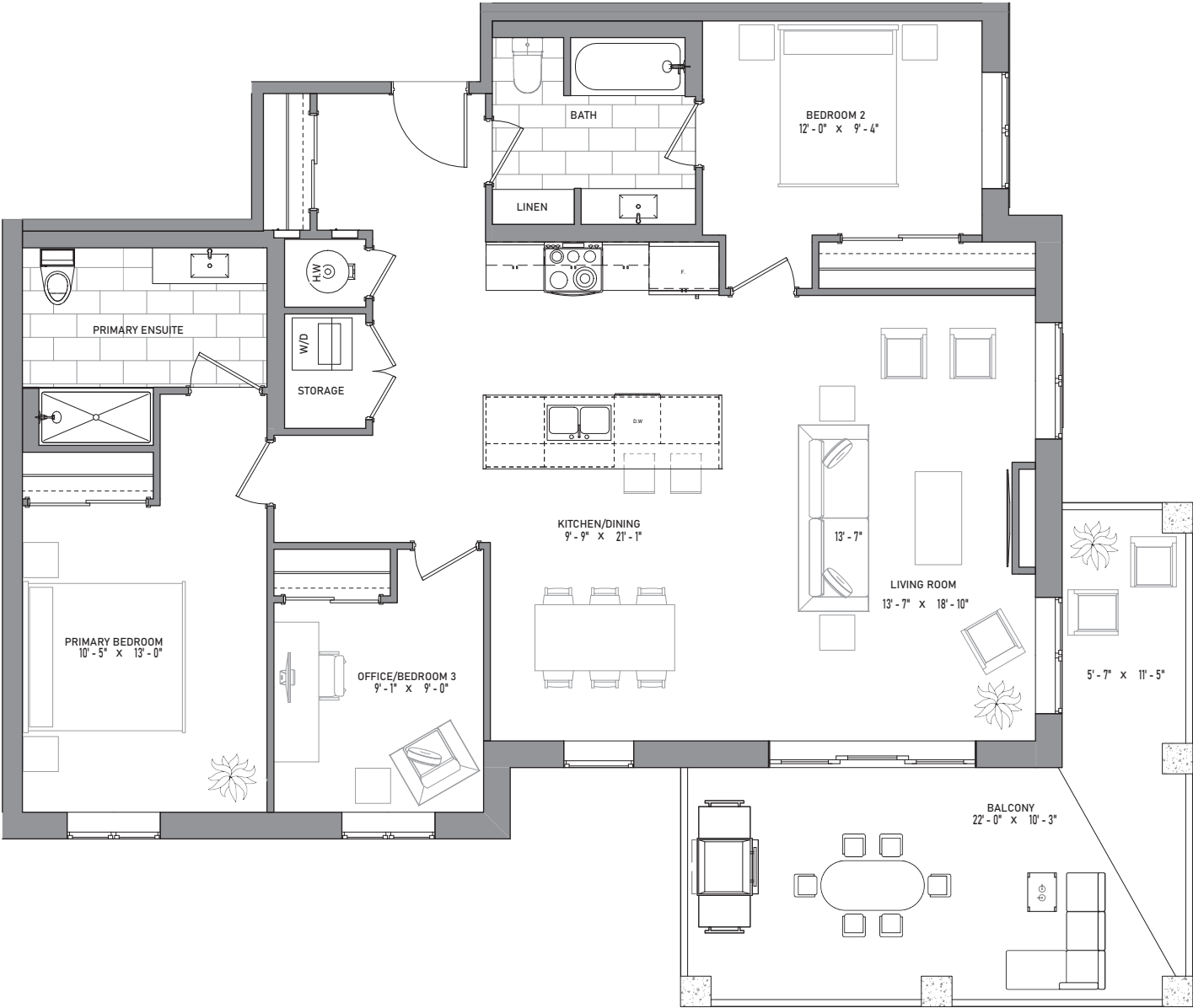
Available on Second, Third and Fourth Floors



This plan is not to scale and is subject to architectural review and revision, including without limitation, the Unit being constructed with a layout that is the reverse of that set out above. Architectural, structural, and mechanical layouts are subject to change without notice. All materials, specifications, details and dimensions, if any, are approximate and subject to change by the Vendor without notice to the Purchaser in order to comply with building site conditions and municipal, structural, Vendor, and/or architectural requirements. Actual usable floor space may vary from the stated floor area in accordance with Bulletin 22 published by the Tarion Warranty Corporation. Bulkheads are now shown on this plan and may be located in areas of the Unit as required. All exterior spaces shown, if any, are exclusive use common elements shown for display purposes only and the location and size are subject to change by the Vendor without notice to the Purchaser. Window location, size and type may vary without notice to the Purchaser. Certain floors may have less floor space due to thicker structural members, mechanical rooms, etc. This plan supersedes any marketing plan or material. Furniture and fixture representations are for illustration purposes only and do not reflect electrical plans for the suite. All suites are sold unfurnished. All measurements are calculated in accordance with industry accepted standards. All images and dimensions are not intended to form a part of any Agreement and are included for display purposes only. All illustrations are the artist's concept. Tile patterns may vary. Actual usable floor space may vary. E.O.E. May 2022.

# Devin

1,396 SQ. FT.    3  2   
+290 SQ. FT. OUTDOOR LIVING



Available on Second, Third and Fourth Floors



This plan is not to scale and is subject to architectural review and revision, including without limitation, the Unit being constructed with a layout that is the reverse of that set out above. Architectural, structural, and mechanical layouts are subject to change without notice. All materials, specifications, details and dimensions, if any, are approximate and subject to change by the Vendor without notice to the Purchaser in order to comply with building site conditions and municipal, structural, Vendor, and/or architectural requirements. Actual usable floor space may vary from the stated floor area in accordance with Bulletin 22 published by the Taron Warranty Corporation. Bulkheads are now shown on this plan and may be located in areas of the Unit as required. All exterior spaces shown, if any, are exclusive use common elements shown for display purposes only and the location and size are subject to change by the Vendor without notice to the Purchaser. Window location, size and type may vary without notice to the Purchaser. Certain floors may have less floor space due to thicker structural members, mechanical rooms, etc. This plan supersedes any marketing plan or material. Furniture and fixture representations are for illustration purposes only and do not reflect electrical plans for the suite. All suites are sold unfurnished. All measurements are calculated in accordance with industry accepted standards. All images and dimensions are not intended to form a part of any Agreement and are included for display purposes only. All illustrations are the artist's concept. Tile patterns may vary. Actual usable floor space may vary. E.O.E. May 2022.